



CPT204, CPT206



WARNING

Read and understand all instructions before beginning installation. Disconnect power to motor and test upon completion. CPT204 and CPT206 should be installed by qualified personnel to ensure the requirements herein have been met. Keep these instructions with the installation. Always abide by local and national electrical code specifications when wiring accessories to motor controls.

CPT204 and CPT206 are UL Recognized Components that meet the UL 325 requirement. They are compatible with most current operator models and brands with electronic controls. Consult your operator manual for detailed instructions about connecting to the motor. Note: An interface module will be required for relay logic operators.

KIT CONTENTS*

- Sensing edge extrusion
- Aluminum mounting channel
- (1) Wired end plug
- (2) Non-wired end plug (10K and non-terminated)
- (2) End caps
- (4) Stainless steel screws

*Bulk contents sold separately; select from above

REQUIRED

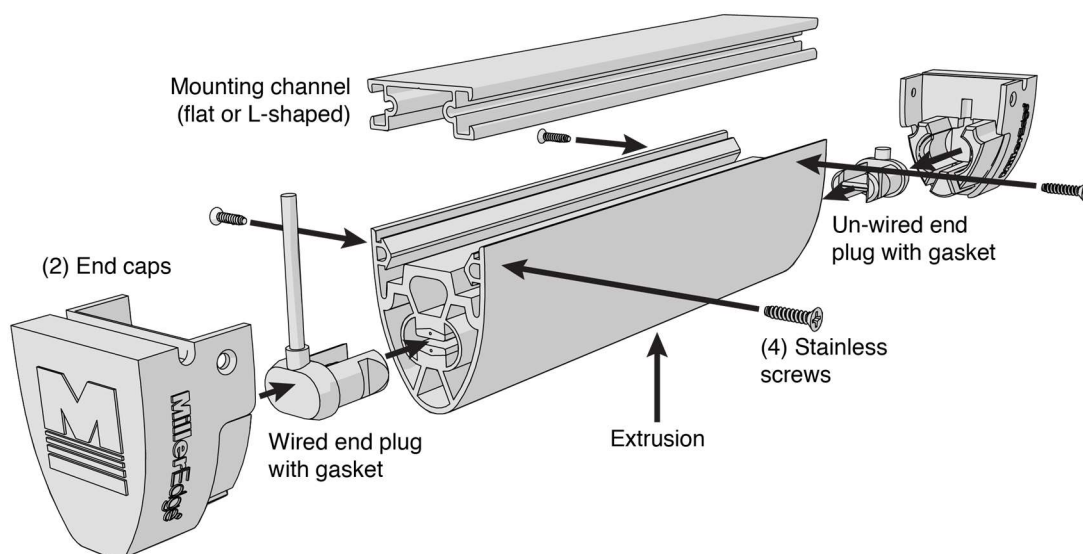
- PVC cutting tool (optional 224-101: CPT Extrusion Cutter)
- #1 Phillips screwdriver
- Hardware for attaching mounting channel

OPTIONAL

- 214-0206: (2) CPT206 End Flaps
- Coil cord
- Junction box(es)
- Retracting reel (non-terminated only)
- RB-D-K10C: Monitored Wireless Door Edge System
- RB-G-K10: Monitored Wireless Gate Edge System
- MWRT12/MWRTA12: Wireless Edge System (non-monitored)
- SM-102: Signature Module

SUGGESTED

- MET-101: Edge Tester
- Multi-meter capable of reading 10K Ω
- Punch or awl



CPT204_CPT206_20201029

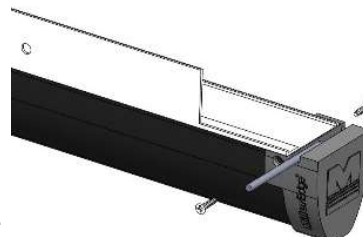
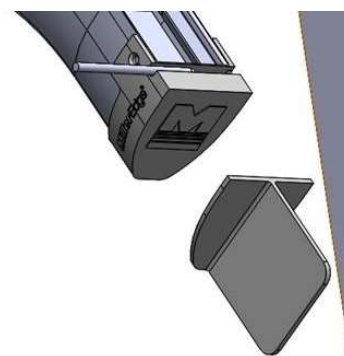
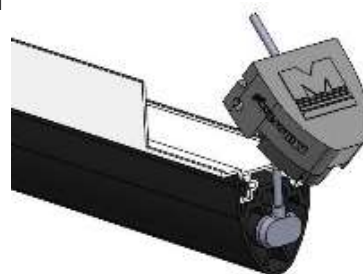


CPT204, CPT206



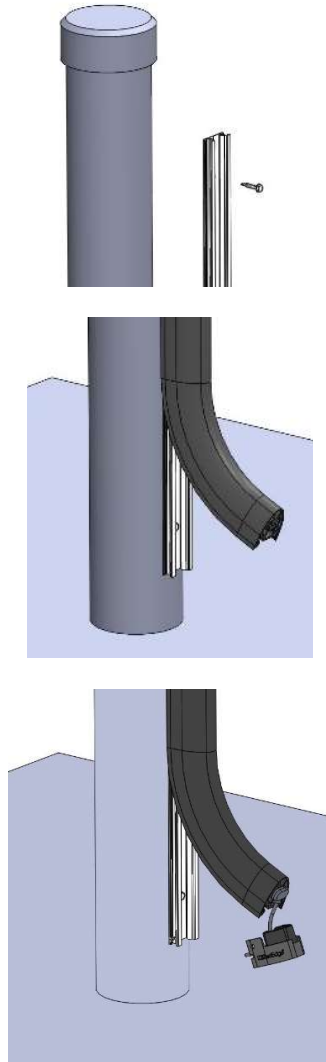
I. DOOR INSTRUCTIONS

- SECTIONAL DOORS:** Measure the door section width. Cut the sensing edge and channel 1-1/4 inch less than the section width.
ROLLING DOORS: Measure the inside tip guide-to-guide distance. Cut the extrusion and channel to be 2 inches less than this distance.
- Measure and cut the mounting channel. Pre-drill mounting holes into the channel. Attach the mounting channel using the appropriate hardware prior to installing the extrusion.
- Align the channel on the bottom door section with a 5/8-inch clearance on each end. If needed, notch the L-shaped channel at each end to clear the bottom corner brackets of the door. Note: Mounting channel is shipped in 5-foot sections. Gaps between sections should be small when installed.
- Starting at one end of the mounting channel, attach the extrusion by wrapping the flaps into either side of channel, pressing firmly into the grooves on both sides. Check that the edge is properly attached along the full length of the channel.
- Remove about 6 inches of one end of the extrusion from the mounting channel. Insert the wired end plug into one end of the extrusion. Insert the wire through the center slot in the end cap, as shown.
- Install the end cap over the wired end plug, fitting the cap into the openings of the extrusion. Apply force until the cap snaps onto the plug. The wings on the side of the end cap will extend along the outside of the extrusion. Reinstall the end of the edge onto the channel.
- Select either the 10K terminated plug (monitored systems) or the non-terminated plug (non-monitored systems). Repeat steps 4 and 5 on the opposite end of sensing edge, using the non-wired end plug.
- OPTIONAL:** If you are using end flaps on a rolling door or grille, install them now by attaching a flap to each end cap with the sticky tape provided. Apply pressure to adhere. If needed, trim the flaps so they fit within the guide properly.
- Firmly hold the end cap onto the extrusion and channel and carefully pierce the extrusion with a punch or awl. Then, insert (2) stainless steel screws (provided) into the wings and tighten. Repeat on opposite end.
- Finally, connect the wires to the junction box or wireless transmitter. Consult your operator manual for connection.



II. GATE INSTRUCTIONS

1. Determine your desired overall finished sensing edge assembly length. Cut the channel to this length. Cut the sensing edge extrusion 1-1/4" less than this length.
2. Measure and cut the mounting channel. Pre-drill mounting holes into the channel. Attach the mounting channel using the appropriate hardware prior to installing the extrusion.
3. Starting at one end of the mounting channel, attach the extrusion by wrapping the flaps into either side of channel, pressing firmly into the grooves on both sides. Check that the edge is properly attached along the full length of the channel.
4. Insert the wired end plug into one end of the extrusion. Insert the wire through the center slot in the end cap, as shown. Note: If necessary, remove about 6 inches of one end of the extrusion from the mounting channel to gain access.
5. Install the end cap over the wired end plug, fitting the cap into the openings of the extrusion. Apply force until the cap snaps onto the plug. The wings on the side of the end cap will extend along the outside of the extrusion. Reinstall the end of the edge onto the channel, if necessary.
6. Select either the 10K terminated plug (monitored systems) or the non-terminated plug (non-monitored systems). Repeat steps 4 and 5 on the opposite end of sensing edge, using the non-wired end plug.
7. Firmly hold the end cap onto the extrusion and channel and carefully pierce the extrusion with a punch or awl. Then, insert (2) stainless steel screws (provided) into the wings and tighten. Repeat on opposite end.
8. Finally, connect the wires to the junction box or wireless transmitter. Consult your operator manual for connection.



III. TECH SUPPORT

For additional assistance, contact Miller Edge Tech Support: 800-220-3343

IV. GENERAL SPECIFICATIONS

Color	Black
Length	Varies in 5' increments
Maximum Length	164 ft. (50 meters)
Sensitivity	CPT204: 2-4 lbf / CPT206: 5-7 lbf
Lead Wire	SJTO, 22 gauge, 10 in. length
Wire Outlet Location	Universal end plug
Electrical Maximum	24 volts AC/DC, 1/2 amp
Electrical Configuration	Normally open
Temperature Range	Meets or exceeds UL Requirement
Exterior Material	Thermoplastic elastomer (TPE)

End Cap/Plug Material	PVC
Contact Element	Conductive polymer
Warranty	1 year
Agency Approvals	UL 325 Recognized Component

V. MAINTENANCE

It is strongly recommended that users test sensing edges at least once per month. Check the sensing edge for cuts, loss of sensitivity, or water damage. Also check for signs of damage to cables or connection points. Compress the sensing edge 2" from both ends and in the center and observe that it sends an electric signal to the controls. Refer to your operator manual for detailed instructions about motor connections.

VI. REPLACEMENT

To replace your Miller Edge Sensing Edge, contact your sales representative. Attempting to repair your Miller Edge Sensing Edge is not recommended and will void the manufacturer warranty.

VII. WARRANTY

CPT204 and CPT206 carry a 1-year warranty from date of shipment from Miller Edge for credit or replacement. This warranty applies to products installed for normal use, where the product is found to have defective materials or workmanship, as determined solely by an authorized factory representative. This warranty is void where evidence of misuse or abuse is present. This warranty covers repair or replacement of the purchased product only; product installation/labor charges are not covered. Miller Edge manufactures its products to meet stringent specifications and cannot assume responsibility for those consequences arising from improper installation or misuse. Installation instructions and testing procedures provided by Miller Edge must be followed for proper operation and maintenance.

VIII. ACCESSORIES

Contact your sales representative about accessories for your installation:

