

Field Configurable Sensing Edge

CPT210



TOUCH SENSITIVE SIGNALING

CPT210 is a UL 325 recognized sensing edge designed for on-site configuration and assembly. Upon contact with an obstruction, the edge signals operator controls to immediately stop and/or reverse motion. The compact profile of CPT210 makes it an ideal choice for narrow surfaces and pinch points.

Easily cut down the CPT210 extrusion to the required length at the job site, ensuring a quick turnaround time. The advanced design of the CPT210 cap, cage, and plug provides a sealed assembly, eliminating the need for adhesive. This feature not only provides flexibility for field length adjustment but also allows users to choose the appropriate termination for monitoring compatibility with the operator. Experience the efficiency and adaptability of CPT210 for seamless integration into your safety systems.

*ENHANCED
END DESIGN*



APPLICATIONS

- Automated gates
- Counter shutters
- Rolling counter-top doors and grilles
- Machine guarding
- Conveyor systems

FEATURES

- Small profile; ideal for narrow surfaces and pinch points
- Enhanced adhesive-free end cap design streamlines field configuration, installation, and adjustments
- Bulk extrusion and end kits available for on-site assembly, eliminating lead times
- Versatile monitoring configurations
- Sealed assembly impervious to dust and debris
- Mounting channel options offer versatility
- Advanced conductive polymer technology for efficient and reliable performance
- Mounts vertically or horizontally
- UL 325 Recognized Component
- CE certificate of compliance
- 2-year warranty
- Made in USA of U.S. and imported parts

610-869-4422
www.milleredge.com





Field Configurable Sensing Edge

CPT210

GENERAL SPECIFICATIONS

Color	● Black
Maximum Length	50 ft.
Sensitivity	Nominal 3-5 lbf
Lead Wire	12 in., 22 gauge, SJTO
Wire Outlet Location	Universal end plug
Electrical Maximum	24 volts AC/DC, 1/2 amp
Electrical Configuration	Normally open non-terminated or terminated: 8.2K ohm, 10K ohm, or diode capacitor options
Operating Temperature	Meets or exceeds UL requirement
Materials	Extrusion: Flexible PVC, conductive polymer, Ends: Molded polymer
Contact Element	Conductive polymer
Agency Approvals	us UL 325 Recognized Component certificate of compliance

OPTIONS

Configurations:

- Monitored
 - 2-Wire
 - 8.2K ohm resistor (green)
 - 10K ohm resistor (blue)
 - Diode capacitor (red)
- Non-Monitored
 - 2-Wire (black)

Other Options:

- Bulk roll
- Edge kits
- End kits (monitored and non-monitored options)
- Mounting channels

OPTIONAL MOUNTING CHANNELS

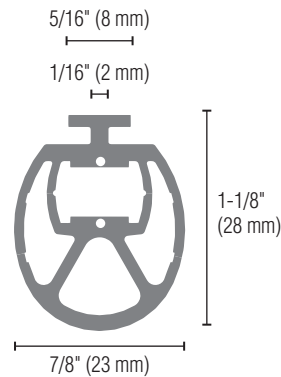


ME210-C3
High Density PVC

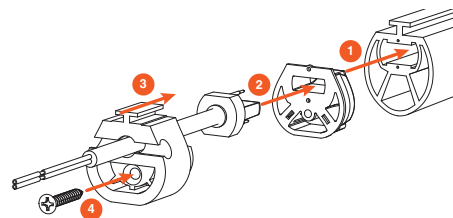


ME210-C7
High Density PVC

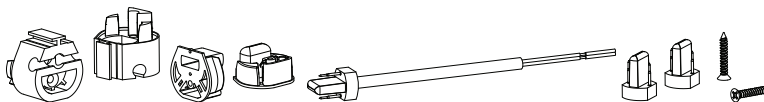
DIMENSIONS



ASSEMBLY



CPT210 END ASSEMBLY



CPT210 END KIT

- (2) Caps, (2) Cages, (1) Wired Plug, (1) Monitored End Plug,
(1) Non-Monitored End Plug, (2) Stainless Steel Screws

RELATED PRODUCTS



MOUNTING CHANNELS



END KITS



EXTRUSION CUTTER



TRANSMITTERS/RECEIVERS



INTERFACE MODULES



CORDS & REELS



JUNCTION BOXES



EDGE TESTER



Contact Miller Edge to ensure compatibility.

© Miller Edge, Inc. All rights reserved
CPT210_Spec_20240118