

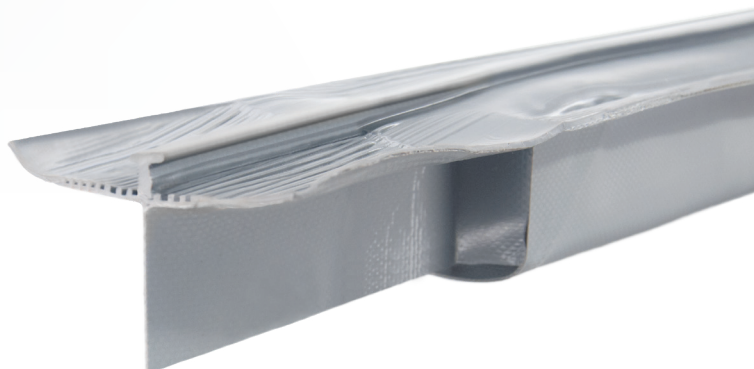
Sensing Edge

MC22



TOUCH SENSITIVE SIGNALING

The MC22 sensing edge is custom manufactured to your exact specifications for length and outlet location. When touched lightly or at an angle, MC22 will send an immediate electrical signal to operator controls to stop, and/or reverse operations. Made with a vinyl wrapping and an extruded T, it is designed to slide into applicable door's bottom retainer. The exterior of the MC22 is highly flexible and can conform to irregularities in the floor.



APPLICATIONS

- Commercial & industrial sectional doors
- Commercial & industrial rolling doors
- Commercial rolling grilles

FEATURES

- Flexible and will conform to floor irregularities
- Optimum size for 2+ inch thick surfaces
- Custom manufactured to user specifications for color, length, and outlet location
- 5 inch end flaps create a complete seal and can be trimmed for custom fit
- Sealed assembly impervious to dust and debris
- Patented Alumaglas™ for superior performance (electric option)
- Extended color options including chemical resistant yellow XR5 jacket
- UL 325 Recognized Component
- 1-year warranty
- Made in USA

610-869-4422
www.milleredge.com





Sensing Edge

MC22

GENERAL SPECIFICATIONS

Color	● Gray, ● Black, ● Yellow, ● Y/B Stripe, or ● XR5 (yellow)
Length	Order in 1/4 in. increments (manufacturing tolerance $\pm 1/4$ in.)
Maximum Length	Electric ⚡: 150 ft., Air-Wave 🌊: 60 ft., Pneumatic 🌬️: 18 ft.
Sensitivity	Nominal 3-5 lbf
Lead Wire	SJTO, 18 gauge, 2 ft. length
Wire Outlet Location	Left or right
Electrical Maximum	24 volts AC/DC, 1/2 amp
Electrical Configuration	Normally open
Operating Temperature	Meets or exceeds UL requirement
Exterior Materials	Heavy duty reinforced PVC
Contact Element	Alumaglas™
Agency Approvals	cULus UL 325 Recognized Component

OPTIONS

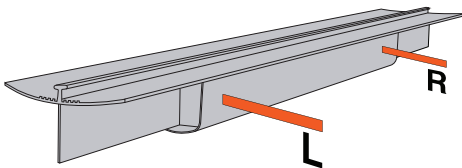
Configurations:

- Monitored
 - 2-Wire ⚡
 - 10K resistor
 - 8.2K resistor
 - Diode capacitor
 - 4-Wire ⚡
- Non-Monitored
 - 2-Wire ⚡
 - Air-Wave 🌊
 - Pneumatic 🌬️

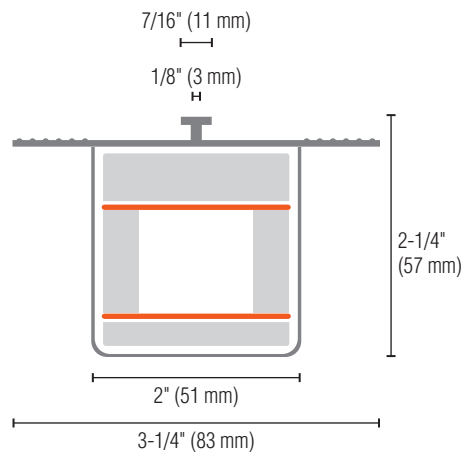
Other Options:

- Coil cord attached
- Extra lead wire
- XR5 chemically resistant cover (yellow)

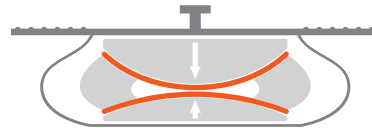
WIRE OUTLET LOCATION



DIMENSIONS



ALUMAGLAS TECHNOLOGY



Miller Edge's patented Alumaglas™ and flexible switch assembly provide extremely low contact resistance for universal applications.

RELATED PRODUCTS



TRANSMITTERS/RECEIVERS



INTERFACE MODULES



COIL CORDS



RETRACTING REELS



JUNCTION BOXES



EDGE TESTER



Contact Miller Edge to ensure compatibility.

© Miller Edge, Inc. All rights reserved
MC22_20231122