

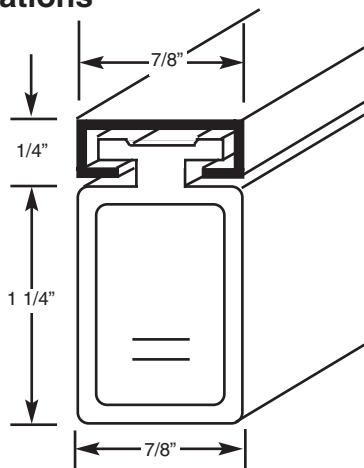
ME111 SensingEdge

• Barrier Gates • Counter Shutters

About the ME111...

This pressure sensitive electric edge can be adapted to suit a wide variety of applications. It is manufactured to user specifications for length, sensitivity and outlet location. When touch activated, the ME111 sends an immediate signal to stop and/or reverse operations depending upon your particular application. Multiple mounting channel designs allow for easy installation on nearly any surface.

Specifications



Color: Black

Length: Per specification to nearest 1/4", max = 20 ft.

Sensitivity: 8psi - standard

Lead Wire: 2 ft. SJO 22 gauge - standard

Wire Outlet Location: specify right hand, left hand or end

Electrical Requirements: 24 volt, 1/2 amp AC / DC power.

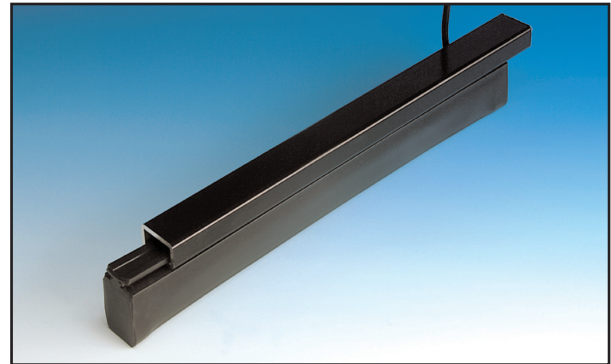
Wiring Diagram: 2-wire, N.O.

Contact Element: Alumaglas®

Mounting Channel: High density PVC

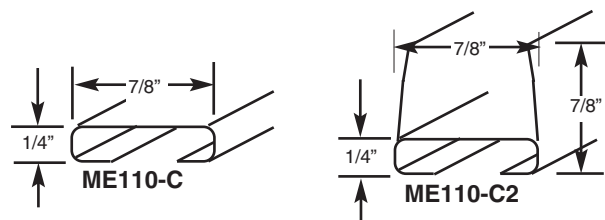
Material: Extruded flexible PVC

Temperature Range: -30°F to +155°F



Options

- 4 Wire self monitoring
- Soft Ends
- Coil Cord attached
- 4 wire controller (MFSC-100)
- 4 wire intrinsically safe controller (FSIS-25-4)
- Pneumatic (MEP111) Air-Wave (MAW111)
- Mounting Channel Designs



Installation:

Place appropriate ME111 mounting channel in desired location. Drill 1/8" holes through channel and into mounting surface every 24". Attach channel to surface with screws. Slide ME111 SensingEdge into channel and wire to controls.

Note:

For safe operation, use a maximum 24 volt, 1/2 amp AC/DC power. Overload can cause damage. For detailed installation instructions, contact Miller Edge, Inc.

U.S. patent #4,398,814 Canadian patent #1,048,066 other patents apply in U.S. and abroad

SensingEdge



Care of the ME111...

Minimum care is required for the ME111 since it is manufactured with only the most durable materials and the highest quality control standards. However, SensingEdges should be examined regularly for cuts or punctures which could damage internal components. Check wiring to be sure connections are secure. When properly maintained, the ME111 offers years of trouble free operation.

Warranty

We will replace within one year of shipment from our factory, any SensingEdge subject to normal use which is found to have defective materials or workmanship, as determined solely by our factory representative. Replacements will be shipped to you freight collect. This warranty is void where evidence of misuse or abuse is present.

Notes