

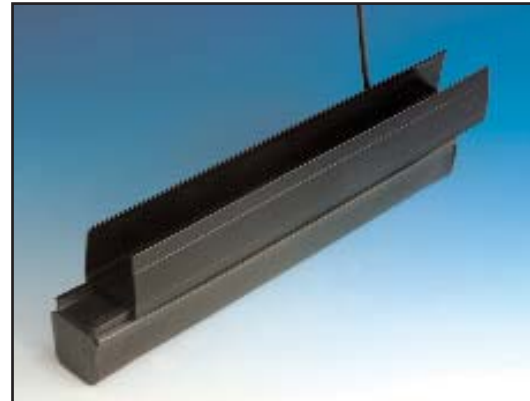


ME112 SensingEdge

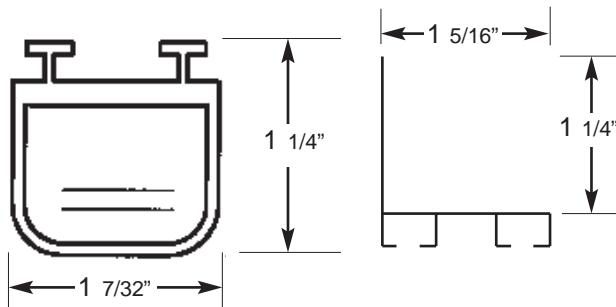
- Commercial Sectional Doors
- Material Handling Systems

About the ME112 . . .

This pressure sensitive electric edge can be adapted to suit a wide variety of applications. It is manufactured to user specifications for length, sensitivity and outlet location. When touch activated, the ME112 sends an immediate signal to stop and/or reverse operations depending upon your particular application. This SensingEdge retrofits easily to 1" to 1 1/4" sectional doors with accepting bottom bar or you can select the compatible mounting channel.



Specifications



ME112-C3

Color: Black

Length: Per spec to nearest 1/4",
max = 50 ft.

Sensitivity: 4 psi standard

Lead Wire: 2 ft. SJTO 22 gauge - standard

Wire Outlet Location: Specify right hand,
left hand, or end

Electrical Requirements: Max. 24 volts
1/2 amp AC or DC power

Electrical Diagram: 2-wire, N.O.
configuration

Contact Element: Alumaglas®

Mounting Channel: High density PVC

Sensing Edge: Extruded flexible PVC

Temperature Range: -30°F to +155°F

Options

- 4-wire N.O. electrical configuration
- Pneumatic (MEP112) or Air Wave (MAW112)
- Soft Ends
- Coil Cord attached
- Retracting Reel
- 4-wire control panel (MFSC-100)
- 4-wire intrinsically safe control panel (FSIS-25-4)
- Extra Sensitive (ME112XS)
- Mounting Channel Option

Installation

Place ME112 channel in desired location. Drill 1/8" holes through channel and into mounting surface every 24". Slide ME112 SensingEdge into mounting channel. Attach channel to surface with screws. Wire ME112 to controls.

Note

For safe operation, use a maximum 24 volt, 1/2 amp AC or DC power. For detailed installation and wiring instructions, contact MillerEdge, Inc.

U.S. patent #4,398,814 Canadian patent #1,048,066 other patents apply in U.S. and abroad.

REV. 1-26-05

SensingEdge



Care of the ME112. . .

Minimum care is required for the ME112 since it is manufactured with only the most durable materials and the highest quality control standards. However, SensingEdges should be examined regularly for cuts or punctures which could damage internal components. Check wiring to be sure connections are secure. When properly maintained, the ME112 offers years of trouble free operation.

Warranty

We will replace within one year of shipment from our factory, any SensingEdge subject to normal use which is found to have defective materials or workmanship, as determined solely by our factory representative. Replacements will be shipped to you freight collect. This warranty is void where evidence of misuse or abuse is present.

Notes