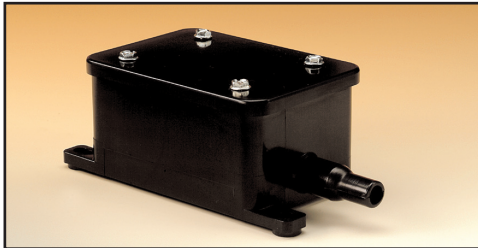


PS20 Air Switch

The PS20 pneumatic switch offers a reliable, low cost alternative to the standard electric sensing edge. The PS20 operates as an effective SensingEdge when attached to a hose that is inserted into the existing weather stripping on most doors. PS20 kits come in many sizes and can be installed on a door up to 18' in length.



APPLICATIONS

For use as entrapment protection on machinery, doors and gates.

- Rolling Doors/Sectional Doors
- For retro-fit on fast-acting doors
- Areas with a water penetration factor, e.g. car washes
- Mass Transit

FEATURES

- Simple Installation • Reliable
- Durable - Weather resistant casing

GENERAL SPECIFICATIONS FOR PS20 AIR SWITCH

Color: Black

Dimensions: 5" L x 2 3/4" W x 2" H

Electrical Configuration: 3-wire SPDT

Electrical Rating: 3A @ 125,250,277 VAC 1/10 HP @ VAC

Lead Wire: Wire leads attached

Cover Material: ABS, NEMA 4 weather-proof enclosure

Operating Temp. Range: -20°F to +158°F

Diaphragm: 0.014" rubber

Max. Pressure: 20 PSI

Max. Switch Freq: 25/second

Max. Pneumatic Load: 2,000mm (78.7") water column

Sensitivity: 1/3 oz. per sq. in.

Pneumatic Kits:

- PS20-KIT12--PS20 Air Switch with 12' hose and plug
- PS20-KIT18--PS20 Air Switch with 18' hose and plug
- PS20-KIT750--PS20 Air Switch with hose and plug
- PS20K500-12--PS20 Air Switch RAH, 12' of 1/2" hose and plug
- PS20K500-12C--PS20 Air Switch 12' of 1/2" RAH, plug and C182-12 (coil cord)
- PS20K500-18C--PS20 Air Switch 18' RAH500, plug and C182-12 (coil cord)

Pneumatic Accessories:

- RAH-375--Pure gum rubber air hose: 3/8" ID, 1/8" wall
- RAH-500--Pure gum rubber air hose: 1/2" ID, 1/8" wall
- RAH-750--Pure gum rubber air hose: 3/4" ID, 1/8" wall
- P-50--End plugs for 3/8" ID and 1/2" ID rubber air hose
- P-75--End Plugs for 3/4" ID rubber air hose
- EP128 NO--Explosion proof air switch in Appleton box; 2 wire, N.O.

Dimensions:

